

RECYCLE RIGHT

When haulers were asked what their biggest struggle is with recycling, they unanimously said **CONTAMINATION!**
It's estimated that 25% of all items put in a recycling container are actually not recyclable, which is a huge problem.

What is contamination?

Contamination can include anything from food waste to plastic bags to electronics. When a certain percent of a batch of recycling is contaminated, the whole batch is considered unusable and thrown away. Therefore contamination can undermine the good recycling habits of others and cause recyclable items to end up in landfills.

What are the top causes for contamination?

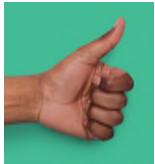
- **Recyclables are dirty.** They should be clean, dry and empty. But don't waste water - rinse quickly only if soiled.
- **Never place bagged recyclables inside your cart or bins. Leave your recycling loose and free!** If you collect your recyclables in a plastic bag, remove them from the bag before placing them in your bin. To understand how a Materials Recovery Facility (MRF) operates, go to...
YouTube: *How does a Materials Recovery Facility Work*
- **Plastic bags or plastic film wrap wreak havoc** with recycling equipment. But the stretchy kind of plastic is recyclable, just not in your container. Return plastic bags/film to Target, Walmart or your local grocery store for proper recycling.
- **Confusion between Composting + Recycling processes.** Food waste, paper products and yard waste CANNOT be recycled. But these organics can be composted in your backyard and then used as soil amendment.
- **Used paper products**, even though made from recycled material, generally have food and liquid contamination. Put those used paper plates, cups, napkins, tissues and paper towels in the trash or composter if available.
- **Confusion around plastics.** If something has the recycling arrows on it, it's recyclable, right? Not always. Those arrows refer to the type of plastic the items were made from, not how recyclable they are. In general, haulers will accept plastic bottles, jugs, jars & tubs used for food, health & beauty, and cleaning products.
- **Textiles should always be donated** unless they are soiled. This includes clothes, bed/bath textiles, shoes. Even ripped jeans can find a second life.



- **E-Waste should always be recycled, but not in your curbside container.** These items contain a variety of materials (some of which are hazardous) and need to be dis-assembled before they can be recycled. Bring electronics to a county collection event or to the retailers found on the county's recycling website.

Household hazardous waste is any product found in your home, yard or garage that can cause harm to human health or the environment when improperly managed. Reduce the amount of hazardous product you buy. Buy only what you can use entirely. Read labels for warnings and disposal instructions.

Clean Sweep Hazardous Waste Collection Thurs/Fri Oct. 7-8th



ACCEPTED ITEMS

FREE to St. Croix County HOUSEHOLDS

- Aerosol cans *
- Brake fluid, carburetor cleaner
- Degreasers, transmission fluid
- Gasoline, fuel, lighter fluid
- Oil filters
- Adhesives with solvents
- Furniture & floor wax stripper
- Shellac, varnish
- Paint stripper & solvents
- Roofing tar & driveway sealant
- Corrosives & lye
- Concrete cleaners (acid) *
- Drain & toilet bowl cleaners *
- Metal cleaners, polish with solvents *
- Cleaners & spot removers *
- Oven cleaners *
- Toilet, tub, tile cleaners *
- Pool chemicals
- Weed killer & fertilizer with weed killer *
- Pesticides, insecticides, herbicides, etc. *
- Insect & rodent poison *
- Fluorescent bulbs
- Household rechargeable batteries
- Mercury thermometers & thermostats
- Smoke detectors

* Non-hazardous alternatives available. Check on-line for options, recipes & solutions

ACCEPTED with a FEE

ALL Paints / Stains

Gallon or Less = \$5 5-Gallon Pail = \$25

Fees are based on can size, not the volume in the can. Combine cans to save money. CASH, CHECK payable to St. Croix County or CREDIT CARD is accepted.

Location: County Highway Shop | 666 E Hwy 12, Town of Hudson

THURSDAY, Oct 7th Households that need later hours: 2:30-6:30 p.m.

FRIDAY, Oct 8th Households with flexible schedules: noon-5:00 p.m.

FRIDAY, Oct 8th Businesses, Churches & Farms: 9:00-11:30 a.m.

Households: Households do not need to pre-register.

Businesses / Churches: To be eligible to participate, businesses must generate less than 220 lbs. of hazardous waste per month to qualify as a very small quantity generator (VSQG). The business/church collection is a fee-based service event. **Pre-registration is required by Thursday, Sept. 30th at 3 pm.** Call 715-531-1907 or download the form from our website and email it in.

Farms: The first 500 lbs. of qualifying hazardous waste is free. Fees for paint and stain will apply. **Pre-registration is required by Thursday, Sept. 30th at 3 pm.** Call 715-531-1907 or download the form from the county website and email it in.

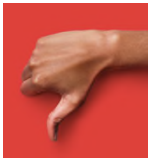


REMEMBER...

This event is held only once this year. If you cannot attend, ask a neighbor or others in the community for help bringing materials to the event. Lines can get long, so combine your efforts.



St. Croix residents may also attend POLK COUNTY's Clean Sweep collection event: **Friday, August 27th**
715-483-1088
www.co.polk.wi.us/recycling



PLEASE READ CAREFULLY:

Due to significant Clean Sweep cost increases, we will no longer be accepting the items below. Refer to the Safe Disposal Method or go to the county's website for more details.

The products below are NOT hazardous waste and can be recycled / disposed of through ALTERNATE METHODS.

PRODUCT	SAFE DISPOSAL METHOD
CAR and AUTOMOTIVE CARE PRODUCTS	
Used Motor Oil and Antifreeze	Bring to participating auto service centers (check county website)
Tires and Batteries (automotive)	Bring to participating battery retailer (check county website) Bring to county TIRE and APPLIANCE collections event Sept 25th
HOME IMPROVEMENT PRODUCTS	
Adhesives and Glues - WATER-BASED Caulk, Grout, Putty, Spackle	Air-dry or mix with cat litter, sawdust or paint hardner until solid, then place in regular trash
PESTICIDES, WEED KILLERS and POISONS	
Fertilizer WITHOUT Weed Killer	Use on other plants and planted areas. If disposing, air-dry or mix with cat litter, sawdust or paint hardener until solid, then place in regular trash
PRESSURIZED CONTAINERS	
Can explode under heat or pressure and should be kept out of regular waste collection.	
Propane Tanks (refillable, small, single-use, non-refillable)	Use entire contents of tank so that it is EMPTY (or it could explode) Bring to county APPLIANCE collection event Sept 25th
MISCELLANEOUS ITEMS	
Appliances and Electronics	Bring to local retailer for recycling (check county website) Bring to county APPLIANCE and ELECTRONIC collection event Sept 25th
Medical, Biological Waste, Sharps	Check with your local hospitals or medical clinics for disposal options
Explosives	Gunpowder, ammunition & fire-works (bring to local police/sheriff)
ACCEPTED at Clean Sweep, but have year-round disposal options	
Latex Paint - WATER-BASED (not oil paint)	Air-dry or mix with cat litter, sawdust or paint hardner until solid, then place in regular trash. \$5/gallon fee is charged at Clean Sweep

New option for year-round hazardous waste collection

There is a new vendor in St. Croix County to provide residents an alternative option for Household Hazardous Waste disposal.

Logistics Recycling in Somerset, WI is certified to manage and dispose of hazardous waste, along with electronics, lamps/ballast, batteries, medical/dental waste, PFAS related waste and document destruction.

These services are available to residents and VSQG (very small quantity generator businesses).

Call to make an appointment and for disposal fees.

Logistics Recycling Inc. | 920-456-0336

Other Recycling Resources

- Visit the St. Croix County Recycling website www.sccwi.gov/Recycling for hauler info, county events, town drop-off centers, Recycle Right, and Portable Recycling Bin reservations
- Check out the A-Z Recycling/Disposal Guide for year-round ways to recycle items outside of the bin...appliances, auto waste, batteries, electronics, mattresses, medication, paint, scrap metal, yard waste and much more. Plus, donation and junk removal options.
- LIKE our page on [facebook.com/sccwirecycling](https://www.facebook.com/sccwirecycling)

REMEMBER...your Recycling Specialist is available for free to present to your community group, business or school.



TIRE COLLECTION

Town of **BALDWIN** (2399 90th Avenue, Baldwin)
open from 8:00 a.m.–1:00 p.m.

Town of **SOMERSET** (748 State Road 35, Somerset)
open from 8:00 a.m.–1:00 p.m.

SPECIAL EVENT TIRE PRICES

- Car: \$6 without rim or \$ 8 with rim
- Truck: \$8 without rim or \$12 with rim
- Tractor tire: \$35
- Heavy equipment tire: \$45
- ATV/Motorcycle tire: \$4
- Bicycle tire: \$1

Pay by **CASH** or **CHECK ONLY** (no credit cards)

MAILING PANEL is for
POSITION ONLY
Printer to provide art

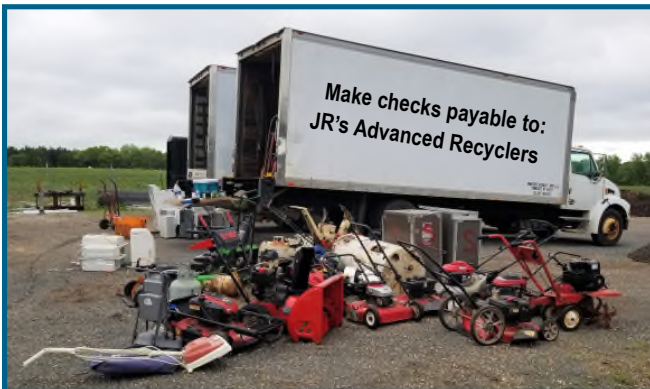
YOUR WASTELINE

St Croix County Recycling Newsletter

Collection Events Sat., Sept. 25th

APPLIANCE & ELECTRONIC COLLECTION

Pay by **CASH** or **CHECK ONLY** (no credit cards)



GLENWOOD CITY (216 W. Oak Street, Glenwood City)
open from 8:00 a.m.–1:00 p.m.

Town of **RICHMOND** (1428 100th St., New Richmond)
open from 9:00 a.m.–1:00 p.m.

Town of **SOMERSET** (748 State Road 35, Somerset)
open from 8:00 a.m.–1:00 p.m.

Most APPLIANCES are \$10

Stove / Frig / Freezer / Microwave / Washer / Dryer / Dishwasher
Disposal / AC / Furnace / Humidifier / Dehumidifier / Water Heater
Water Softener / Compressor / Garage Door Opener / Vacuum
Call for pricing on Gas + Commercial Units and additional items.

ELECTRONICS	COST	ELECTRONICS	COST
CD Player	\$15	Small Radio	\$15
Cell Phone	Free	Stereo Receiver	\$25
Copier (Small)	\$25	Stereo (Console)	\$50
Copier (30-50 lbs.)	\$60	Telephone	\$3
Copier (Over 50 lbs.)	\$135	TELEVISIONS:	
Computer/Laptop	\$15	13" & Smaller	\$25
Fax Machine	\$20	14-19"	\$30
Keyboard & Mouse	Free	20-27"	\$35
Modem (External)	\$10	28"+	\$55
Monitor CRTs ≤ 17"	\$30	Console	\$55
Monitor CRTs ≥ 18"	\$35	Plasma/LCD ≤ 20"	\$20
Printer (Small)	\$15	Plasma/LCD ≥ 21"	\$30
Printer (Large/Laser)	\$35	Smoke Detector	\$2
Scanner	\$15	Treadmill	\$25
UPS/Battery Backup	\$25	Typewriter	\$15

Fluorescent BULB pricing varies based on style \$0.60 - \$4.35